

UNIT B-3 = 699 S.F.



Inglese
Architecture
& Engineering, LLC

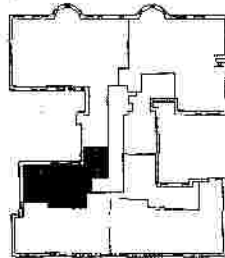
150 Union Avenue
East Rutherford, NJ 07073

201.438.0081 Tel.
201.438.0225 Fax.

john.inglese@verizon.net

BLOCK 1818
LOTS 32 & 34

131 KENSINGTON AVE.
JERSEY CITY, NJ



B - FLOOR (3RD LEVEL) KEY PLAN

JOHN C. INGLESSE, AIA, PE
NJ License No. A108469
NJ License No. GE29087

B - FLOOR (3RD LEVEL)
UNIT B-3

DRAWN BY: RAA
CHECKED BY: JCI
DATE: 05-22-06
PROJECT NO.: 06020

DRAWING NO.:

23 OF 51